

System Architecture for Mobile-phone-readable RF Memory Tags

Iiro Jantunen, Jyri Hämäläinen, Timo Korhonen
 Department of Communications and Networking
 Aalto University
 Espoo, Finland
 {iiro.jantunen, jyri.hamalainen, timo.korhonen}@tkk.fi

Harald Kaaja, Joni Jantunen, Sergey Boldyrev
 Nokia Research Center
 Helsinki, Finland
 {harald.kaaja, joni.jantunen, sergey.boldyrev}@nokia.com

Abstract — We have developed an open architecture platform for implementing passive radio-frequency identification (RFID) tags with a mass memory. Purposes for such mass memory tags are, e.g., multimedia files embedded in advertisements or logged sensor data on a low-power sensor node. In the proposed architecture, a mobile phone acts as the reader that can read or write the memory of these RFID tags. The architecture is designed so that development path to a full Network on Terminal Architecture (NoTA) is feasible. The wireless reading speed of the mass memory tags, demonstrated to be 112 Mbit/s, is in range that a 3-minute VGA size video can be loaded from the tag to the phone in less than 10 s.

Keywords — *Memory architecture; Multimedia systems; RFID; telephone sets; RF memory tags*

I. INTRODUCTION

RFID tags are increasingly a part of our life; transport, traceability, and secure access are some of the main uses of this technology today. Conventional machine-readable wireless tags, e.g., Near Field Communication (NFC) tags, normally have a very small memory in range of hundreds of bytes or kilobytes. Some RFID standards include an option to have a flexible-use memory, but the capacity is low compared to factory-set fixed-content memory. Tag selection is based on reading the content in a selected tag memory address (e.g., tag or manufacturer ID). As the memory capacity of these tags is small, the amount of data to be transferred is also small and power consumption of RF communication is, thus, not a critical issue.

To overcome the storage capacity limitation of passive tags, Wu et al. increase effective tag storage sizes with proposed distributed RFID tag storage infrastructure (D-RFID stores) [1]. Ahmed et al. focus on RFID system unreliability and improvements in middleware for object tracking and object location with moving readers or tags [2][3]. Ying described a verification platform for RFID reader that utilized Ultra High Frequency (UHF) frequency [4]. Pillin et al. have developed a passive far-field RFID tag using the 2.45 GHz Industrial, Scientific and Medical (ISM) band, with a data rate of 4 Mbit/s on the range of 5.5 cm [5]. As an example of a proprietary solution, HP's *Memory Spot* RFID tag also works on the 2.45 GHz band and has demonstrated 4 MB memory and 10 Mbit/s data rate [6].

Today's mobile phones provide music and video players, which make it possible for consumers to enjoy entertainment while on the move. Acquiring new multimedia content by downloading or streaming, however, is hampered by the high cost and slow speed of Internet connections, as well as by the

fact that commonly used physical multimedia formats, such as optical disks, cannot be read with a mobile phone. Thus, to make acquiring new content easier, cheaper and less power-consuming, we propose a new technology based on RF memory tags readable and writable by mobile phones.

The problems of low data reading rate and small memory size provided by contemporary RFID tags become emphasized if one considers mobile users reading multimedia files from tags embedded on, e.g., paper media. The attention span of a mobile user is about 10 seconds [7]. Within this period, the user could get a single multimedia content file from a memory tag. Considering a movie trailer, the file size for a 2-minute 640×320-pixel 30-fps (3 Mbit/s), encoded with H.264, would be in range of 50 MB [8]. The required minimum data transfer rate from the user point-of-view is thus 50 Mbit/s. This exceeds the maximum data rate available by 13.56 MHz NFC technology, 848 kbit/s, by a factor of 60. Even the maximum data rate for NFC demonstrated on a laboratory set-up, 6.78 Mbit/s [9], is not enough. Thus, there is a need for a new high-speed touch-range RFID radio interface.

The aim of our research has been to develop a high-capacity memory tag, which is wirelessly readable with a mobile phone and suitable for consumer markets in ubimedia applications [10][11]. The mobile phone acts as the user interface for reading and writing passive RF memory tags that contain a high-capacity memory (0.1–1 GB). The reasoning for the proposed technology was justified by modern trends in non-volatile memory technologies, according to which the power consumption, physical size, and price of memory are continuously decreasing.

In this paper we describe and specify a network architecture, which enables mobile phones to read and write passive RF memory tags. The architecture has been developed and demonstrated in the EU's 6th Framework Programme (FP) "Micro-Nano integrated platform for transverse Ambient Intelligence applications" (MINAmI) project [12], and thus the architecture is referred to as MINAmI Architecture. Important architecture requirements include openness, modularity, scalability, and energy efficiency. Openness and modularity are needed to support creation of novel applications and services by 3rd parties. Scalability of data rate is needed to enable evolution of the technology along with evolution of multimedia services. Energy efficiency is essential to enable passive operation of the tags as well as to save the phone's battery.

The paper is organized as follows. In Section II, we introduce the system architecture, along with a key component of the architecture, RF memory tags. In Section

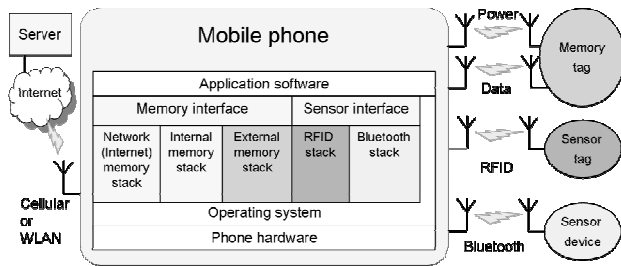


Figure 1. MINAmI Architecture

III we introduce a novel dual-band radio subsystem and its hardware and software implementation. In Section IV, we present the current status of implementation of the architecture and discuss possibilities for future development. Section V concludes the paper.

II. MINAMI ARCHITECTURE

The proposed MINAmI architecture makes use of the mobile phone’s capability of running software and providing several radio interfaces (Figure 1 [11]). The architecture is modular, enabling simpler and faster development of new technical extensions (e.g., RF memory tags). Our architecture focuses on utilization of modularity on component level (e.g., where to plug memory tag functionality) and on communication level (e.g., how the available memory tags are utilized). At short proximity domain (range < 1 m), different tags are communicating locally with a mobile phone. In the present work we have concentrated on the RF memory tags. The sensor parts of the architecture (RFID sensor tags and Bluetooth sensor devices) have been studied in an earlier project [13][14].

The main RF memory tag architectural design challenges include target platform performance obstacles, such as available bus operations (R/W) and power requirements, especially when drawing the line for autonomous operations in described MINAmI architecture. The other challenge is minimizing changes to the existing system communication layering, only to the external memory stack block. The choices in the MINAmI system architecture were able to support both existing standard radios for low-rate sensors, and the high-rate high-capacity memory tags.

A. Network-on-Terminal Architecture (NoTA)

NoTA is modular service-based system architecture for mobile and embedded devices offering services and applications to each other. The concept is being defined in an open initiative, in NoTA World [15]. NoTA is also known as an open device distributed architecture, which allows direct connections between different nodes, within subsystem or between subsystems. This architecture supports both messaging and streaming services. The beauty in the architecture resides in modularity and transport independency. Direct connection between subsystems improves the efficiency as they do not necessarily require any processor involvement, when subsystems have all the needed functionalities available for their independent operations. Transport-specific portion is hidden underneath NoTA communication layering.

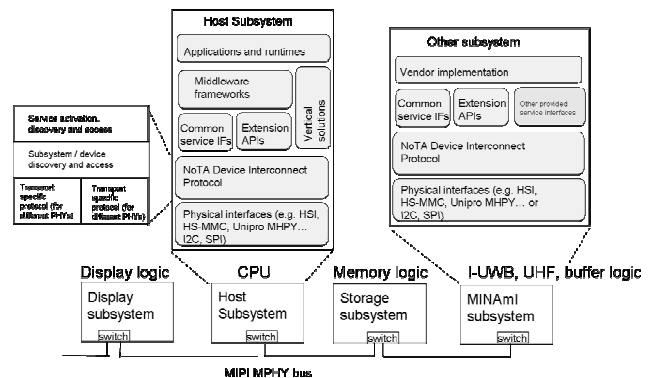


Figure 2. NoTA extension architecture for MINAmI subsystem, where HSI - High Speed Serial Interface; HS-MMC - High Speed MultiMediaCard; SPI - Serial Peripheral Interface bus.

NoTA communication layering is built around transport-independent parts and interfacing towards transport-specific parts (Figure 2). Device Interconnect Protocol (DIP) provides logical links between a requesting subsystem and other subsystems or within a subsystem.[15]. DIP is a device-level communication protocol that can be implemented for various physical interfaces ranging from MIPI (Mobile Industry Processor Interface) high speed serial interfaces and Universal Serial Bus (USB) to wireless interfaces, such as Bluetooth [16][17].

NoTA host subsystem and neighboring subsystems are connected via the high speed physical interface. DIP adapts physical interfaces to the upper layers. It is the lowest layer that is common for all subsystems (i.e., also for MINAmI subsystem) and hides the physical dependencies underneath. Above DIP there is a common service interface used for resource management, file systems, and system boot-ups. Middleware frameworks, e.g., for multimedia, USB, and other applications, use a common service interface or extension Application Programming Interface (API). The architecture also takes into account vertical solutions, which may require an optimized protocol design for certain requirements that are tied to HW-specific applications.

NoTA subsystem structure takes into account possibility to add different types of independent (service/application) subsystems to the architecture, and MINAmI architecture forms one high data rate high capacity subsystem.

MINAmI subsystem offers memory tag read/write, storage and local connectivity services to other subsystems within mobile device, and its architecture is compatible with NoTA communication layering. MINAmI subsystem includes both the mobile phone (Mobile Reader/Writer) and the tag and all the relating hardware and software resources. Mobile Reader/Writer sees the contents of the memory of a passive RF memory tag only when there is an established connection, i.e., power field and data connection exists.

B. RF Memory Tags

The focus of our research has been on mobile-phone-operable memory tags suitable for consumer markets and ubimedia applications. The tag is developed as a part of our mobile-phone-centric architecture. Our memory tag

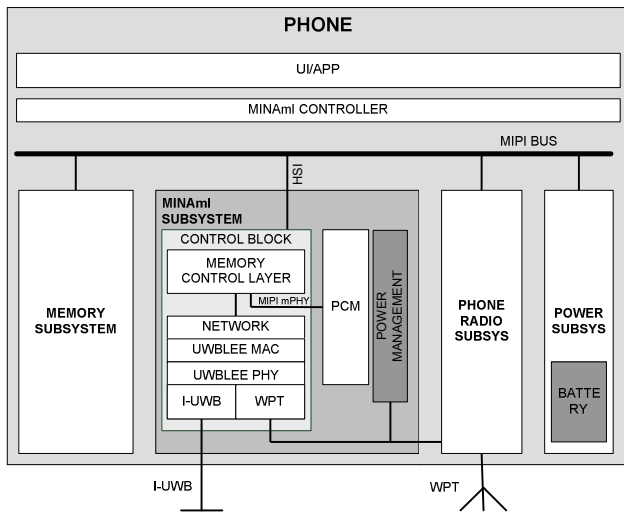


Figure 3. MINAmI Architecture on phone

development targets improving both transfer speed and storage capacity. These improvements give direct benefit for ubimedia users.

The target memory capacity of our memory tag has been in the range of gigabits and mobile reader/writer transfer speed to and from memory tag in excess of 10 Mbit/s. The same design platform is usable for both ends, for mobile phone platform reader/writer and for tag implementation. When designing the platform, various important design parameters, such as the selection of the used radio technology, were considered to provide an efficient and low-power solution for mobile reader/writer and tags.

It was important to make sure that connectivity technology is simple enough for the user, e.g., it should facilitate easy content selection (see Section III.D). Memory tag content selections should be based on metadata (e.g., filenames, file content types, file content keywords). Due to the large memory size, power consumption for memory access is a critical design issue, both for reading and writing the memory tag. To be successful on the market, RF memory tags for ubimedia must be passive to make them as small (size) and cheap as possible, and to achieve autonomous usage with minimum maintenance (e.g., usage without charging of battery). This severely limits the power budget. On the other hand, a short communication range (even touch) is sometimes preferable to make it easier for the user to physically select the tag. An RF memory tag will be read many times by different users, but written more rarely – in some cases, only once. The memory unit must work reliably even with several consecutive read cycles. A limited write throughput due to power constraint is not an issue, as data is rarely written by the users.

III. UWBLow END EXTENSION

As memory tags have high data storage capacity, a high-speed radio is needed for communication to enable reading even all the contents of the tag in an acceptable time. Currently available mobile phones contain several radio transceivers, such as cellular, Bluetooth, and Wi-Fi, along

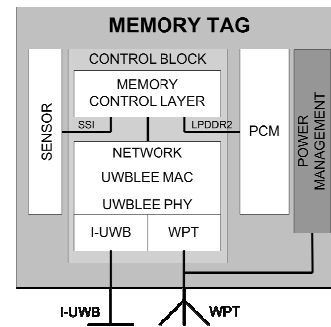


Figure 4. MINAmI Architecture on a RF memory tag

with NFC. Most of the technologies are made for well-established communication between active devices, consuming a relatively large amount of power. These technologies are also not inherently designed for ad-hoc, possibly one-time, connections between devices that have not communicated with each other before, resulting in long latency in establishing the communications. For example, in an environment with many unknown Bluetooth devices, the Bluetooth connection setup latency can be over 10 seconds [18]. NFC enables communications between an active and a passive battery-less device and is physically more selective; its communication range is almost in touch. However, it has severe limitations in data transfer speed.

To provide higher data rates, a wider frequency band available on higher frequencies needs to be used. On the other hand, the efficiency of wireless power transfer (WPT) decreases as a function of center frequency. To solve the problem of providing high-speed communication (high frequency needed) while simultaneously providing power wirelessly to the tag, a dual-band radio interface has been proposed [19]. One narrowband signal on RFID frequencies (e.g., RFID frequency bands globally available between 860–960 MHz) is used to power the tag and to provide a mutual clock reference for both ends of the communication link, whereas the communication link itself is based on impulse UWB technique to provide a high communication bandwidth and scalability for even higher data rates.

As the selected RFID frequencies are approximately in the same frequency range as GSM/WCDMA 900 MHz, in the reader there is a possibility of integrating the WPT function to the existing Phone Radio Subsystem, as presented in Figure 3. In that case, Phone Radio Subsystem is designed so that the WPT Physical (PHY) Layer function may request a direct access to control the activation of the narrowband transmitter. Especially, the time-domain interleaving of different functions is important to support co-existence of GSM/WCDMA and WPT signaling.

The architecture of the RF memory tag (Figure 4) is similar to the MINAmI subsystem on the mobile phone. For simple RF memory tags, no network layer implementation is needed to take care of the point-to-point communication between the reader and the tag, and therefore is handled on Medium Access Control (MAC) layer.

As an option for use-cases like data-logging sensor devices, the memory control layer provides a sensor interface. During the sensing, the sensor data is stored to the

Phase-Change Memory (PCM) block and the low data-rate data capturing is powered from a battery or with energy harvested from the environment. For fast downloading of the logged data, the reader powers the sensor tag wirelessly.

A. Hardware architecture

This subsection describes the enabling technologies.

1) Radio Front-end

As presented in [19], very simple super-regenerative transceiver architecture can be used in impulse UWB communication to achieve required data-rates over short distances. In contrast to conventional impulse UWB transceivers [20] there is no need for multipath recovery over the distances below 30 cm. This decreases the requirements set for the UWB transceivers. This is used to minimize complexity and power consumption of the transceivers. In the aforementioned super-regenerative transceiver one super-regenerative oscillator is used alternately both to generate transmitted pulses and to amplify received pulses, and no linear amplifiers are needed. Thus, the architecture utilizes the inherently low duty cycle of the transmitted impulse UWB signal also in reception the receiver being fully active only exactly during the detection of incoming pulses.

Synchronization is often problematic in impulse UWB systems because of the low duty cycle and pseudo-random timing of pulsed signal, and due to frequency drift and differences of reference clocks between the transceivers. In the proposed system the frequency synchronization between the reader and tag is achieved thanks to the mutual narrowband WPT signal, which is also used as the reference clock. The phase synchronization of impulse UWB transceivers is also easier to achieve due to decreased need for pseudo-random time-coding of pulse patterns.

The transceiver structure supports simple On-Off-Keying (OOK) modulation. The data-rate and power consumption is also scalable depending on the power level available for the wirelessly powered tag. Due to the simplified transceiver structure, targeted ultra-low power consumption and partial exploitation (500 MHz) of full UWB band (3.1–10.6 GHz) authorized by Federal Communications Commission (FCC) for unlicensed use, the impulse UWB system referred here is called UWBLEE (UWB Low End Extension).

Altogether, the optimized transceiver architecture makes it possible to achieve required high data-rates with a low power consumption performance (a few mW) suitable for WPT. As a proof-of-concept a complete wirelessly powered RF front-end implementation of the super-regenerative transceiver is presented in [21] by using a single super-regenerative oscillator for transmission and reception. The front-end implementation supports data-rates up to 112 Mb/s with the energy consumption of 48 pJ/bit in reception and 58 pJ/bit in transmission. The feasibility of the ultra low power consumption in high data-rate two-way communication is verified with an integrated RF front-end implementation based on the symmetrical transceiver architecture proposed earlier [19]. A 900 MHz WPT signal is used as a mutual clock reference and the communication is done over an impulse UWB link at 7.9 GHz center

frequency. The scalable data-rate of UWB link up to 112 Mbit/s has been demonstrated as well as robustness against narrowband interference.

2) Non-Volatile Memory (NVM) technology

The main reason to pick up PCM in favor of any other memory technology [22] were the benefits of PCM technology, e.g., the estimated high number of read/write cycles as 1×10^6 , which consequently results in need of no or just a lightweight wear leveling algorithm, and the bit alterability – lack of need of block erase cycles (as with flash memory) when data should be stored. From the perspective of technology lifecycle PCM stands now between a pure innovative technology and early adopters' stage. There are several 90 nm products [23] on the market already and more to come.

Aggregating main memory characteristics in comparison with NAND/NOR flash technology and DRAM execution memory, PCM stands between those two in terms of cost per die. It is characterized as 5.5 F² factor in cell size having the same wafer complexity as DRAM technology. Currently only Single Level Cell (SLC) PCM is available, though Multi-Level Cell (MLC) PCM is on the way out, which can substantially extend the density and, justify the cost structure. Thus, the application range can be quite wide from external usage (cards, keys) and wireless applications (RF memory tags) to high performance computing applications (caches, code execution, data storage). Considering reliability characteristics it is important to note that PCM technology gives more than 10 years retention ratio that can be extended even further, if necessary, by proper bit error management.

PCM has performance characteristics such as read & write latency and read & write endurance almost as good as DRAM, while giving clear benefits through the non-volatile nature of PCM technology. PCM has a low system-wise energy consumption (~0.2 mW/pF read, <1.25 mW write) ~<1 mW/GB of idle power, access time comparable to DRAM (~85 ns), with read latency 50–100 ns, write bandwidth from 10 to 100+ Mbit/s/die, write latency 500 ns – 1 μ s, various packaging and die stacking solutions, high-speed low-pin-count low-power interface solutions, and maturity of the technology as such.

The PCM technology highlights provide clear reasoning for the selection of such technology for the RF memory tag application, preserving the opportunity to justify it even further when some other application should be designed.

B. Software Architecture (protocol stack)

The MINAmI software architecture (protocol stack) is designed to be modular and scalable. The protocol stack is based on three layers: Network Layer, MAC Layer, and PHY Layer. The application programming interfaces (API) of the layers are open for 3rd parties. These layers will be presented in the following sections. The protocol stack has been developed taking into account future compatibility with NoTA architecture. Care should be taken to have a clear implementation path towards the final architectural (NoTA) solution.

1) Network Layer

Network Layer will first only provide point-to-point connections regardless of state. In future, also applications using multiple targets could become feasible when MINAmI Subsystem is in active mode. If a point-to-multipoint network protocol is needed, nanoIP is easily implementable [13][24]. However, to get full internet support classical IP protocol may be valid, and more common in networking devices. In the final architecture (NoTA) solution, the network layer will consist of Device Interconnect Protocol (DIP), as a middleware, which guarantees the compatibility with NoTA. In DIP protocol, it is possible to select, which transport mode and network is used. For example DIP TCP L_IN (transport selected) is ready to be used within one device and between several devices in a sub-network as such. Multicasting must be enabled in IP interface in order for device discovery to work. Nodes, which are in different sub-network, cannot be detected [15].

Packet size is an important parameter and depends on what is feasible for MAC and PHY layers. Upper layer packets are segmented and reassembled and this is dependent on what kind of packet sizes the system supports.

2) MAC Layer

The MAC of the novel dual-band radio interface has three different operational modes: the passive mode, where no internal power source is available or used; and the active and semi-passive modes, where internal power source is available. Tags on battery-less objects without power wire connection (e.g., implanted on paper) are passive.

In the active mode, the mobile phone actively searches and selects the target tags, sends the targets the WPT signal for powering and for frequency synchronization of the communication link, reads/writes data on the tags, and closes the connection to the target when active connection is no longer required. This operation can be an automatic feature, or enabled by the user (initiating the application for reading and writing the tag). In the semi-passive mode the phone receives data sent by an outside device, but powers itself, allowing a longer communication range, which would otherwise be limited by the WPT link. In semi-passive mode, however, the initiator device takes care of the synchronization of the I-UWB communication link.

Active mode states are used by battery-powered mobile devices, whereas passive mode states are applied for passive devices and tags. In passive mode, possible connections are powered by an outside device with WPT. In the passive operating mode the default state (when powered by an outside device) is P-IDLE, i.e., ready to receive any data, after the boot-up sequence.

The main operational states of UWBLEE MAC are shown in Figures 5 and 6. In addition to the shown directions of movement from state to state, there need to be possibility of built-in error recovery operation from any operational state to the corresponding idle state (A-IDLE or P-IDLE). For the applications requiring higher security, a protocol based on NFC is applied for the ongoing data transmission.

3) Physical Layer

UWBLEE PHY layer controls both the I-UWB communications and Wireless Power Transfer (WPT)

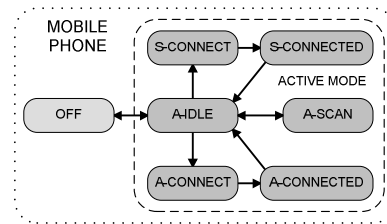


Figure 5. Active (and semi-passive) UWBLEE MAC states on a mobile phone. Active states denoted with A, semi-passive with S.

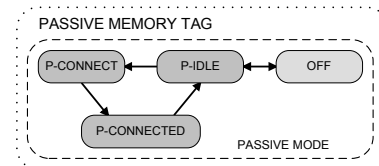


Figure 6. Passive UWBLEE MAC states on a RF memory tag.

TABLE I. UWBLEE PHY IN DIFFERENT MAC STATES

	MAC mode		
	Passive	Semi-passive	Active
I-UWB	Transmit / receive		
WPT synch	Receive	Receive	Transmit
WPT power	Receive		Transmit
Power source	WPT reception	Battery	Battery
Remarks	Being read / written		Reading / writing other devices

transmission. Depending on the operational mode (active or passive) WPT link is used to send (or receive) power and/or to provide the clock reference signal.

UWBLEE PHY is divided to two sub-blocks: I-UWB PHY and WPT PHY. I-UWB PHY controls the Impulse-UWB radio interface and WPT PHY controls the Wireless Power Transfer interface. I-UWB PHY and WPT PHY are coordinated by UWBLEE PHY so that I-UWB transmission is synchronized with the WPT transmission.

The function performed by UWBLEE PHY is defined by UWBLEE MAC, as shown in Table 1.

C. Packet-level Communication

The MINAmI subsystem communication between active mobile reader/writer and passive RF memory tag consists of periods shown in Figure 7. In the beginning there are no tags within the mobile reader/writer local connectivity coverage. If the mobile reader/writer detects a tag during the powering period, it tries to scan all tags available (in the polling period) and – based on the current selection criteria – choose one with whom to communicate (in the activation period). The right tag is found by scanning the coverage area, synchronizing communications with the tags, and selecting the right tag. After this selection, connection and device configuration is executed in the initialization period to set communication parameters, to specify packet level parameters (e.g., length, memory allocation). The connection period is initiated when connection between mobile reader/writer and selected tag is established. This is followed by the data transmission period, reading and/or writing

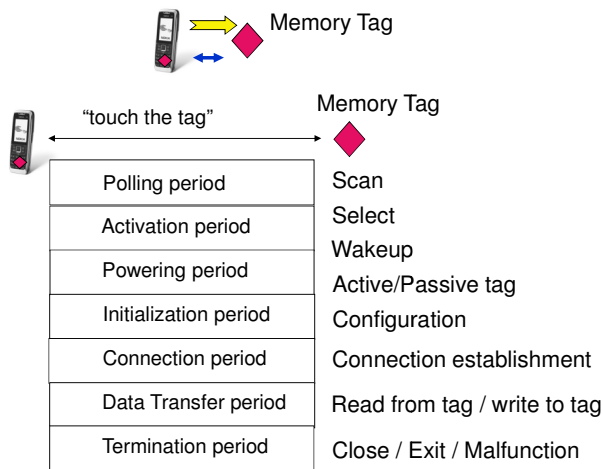


Figure 7. Mobile reader/writer to RF memory tag communication sequence

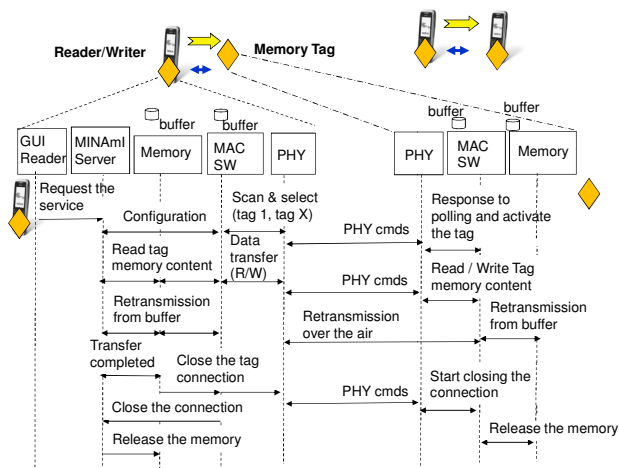


Figure 8. Basic MINAmI subsystem communication setup sequence

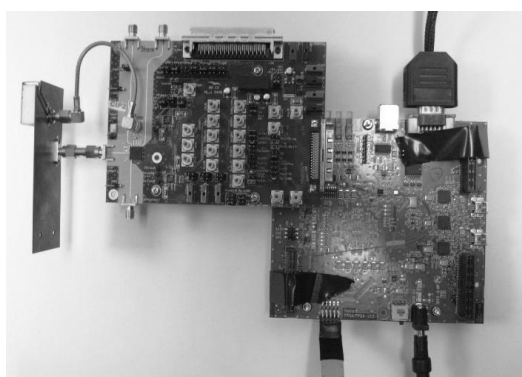


Figure 9. Our UWBLEE implementation

selected content from/to tag. After successful data transmissions, in the termination period, connection is closed or continued with another read/write operation to the tag.

Basic connection procedure between a mobile reader and a tag is described in Figure 8, which also identifies affected

internal entities, e.g., MINAmI server, memory management, and communication entity (MAC and PHY layers). For the air interface, the data from/to the non-volatile storage memory (PCM) is buffered into a DPRAM buffer memory equal to the maximum packet size transferred over the air.

D. File System Design

The mobile phone can read tags and with writeable tags the phone can also write all or parts of their contents. The communication capacity between the mobile terminal and the RF memory tag is targeted to exceed 50 Mbit/s (as discussed in Section I). Plug-in software (External memory stack in Figure 1) is required to facilitate seamless use of the tag memory for mobile phone applications.

The memory tag can be used as an extension to the local file system of the reader (e.g., mobile phone). The memory tag can be either a passive and cheap one or an active one, including an own power source and thus being more expensive [11]. Plug-in software in the file system of the reading device handles the connection to the memory tag. Storage space on the memory is mounted on the local file system in the same way as any detachable storage. The volatile nature of the connection causes overhead in maintaining the file system view in the reader/writer device.

Adding a processing element to the memory simplifies the connection. An ultra low-power processing element can process the access requests independently and even provide some more advanced services like metadata-based queries. A service proxy relays the service interface of the memory directly to the applications running on the accessing device. The volatile nature of the connection is not a problem if the server is made stateless and transactions atomic.

Device internal modules need to support NoTA to get full benefit of subsystem independency and still give a fast connection between subsystems. This interconnect architecture allows future extensions for modules within one device.

IV. DISCUSSION

The RF memory tag (i.e., mobile reader/writer and tag) solution was developed and tested in the MINAmI project. Implementation is shown in Figure 9. The development of a RF memory tag sub-system of MINAmI project is based on a flexible, FPGA-based hardware platform. The sub-system takes benefit from the ultra-low power UWBLEE transceiver architecture, which is suitable for data rates required in RF memory tag applications. The technical results are promising and useful for the concept of mobile-phone-readable RF memory tags. The data-rate of 112 Mbit/s has been achieved over the novel radio interface in technical demonstrations [21]. This leaves room for up to 50% protocol and memory access overhead when targeting to 50 Mb/s end-to-end communication. On the PHY and MAC layers short target distance and point-to-point communication efficiently minimize the protocol overhead on packet level. However, efficient pipelining in buffering of the data is in crucial role in optimization of the end-to-end system. The third important factor is the memory access

speed. This is relevant when reading data from the source memory and when writing the data to the target storage memory. As shown in Section III A.2 the continuous development of NVM memories is will provide power-efficient and fast solutions for the target applications. Altogether, the listed factors and the results achieved with the demonstration platform show that mobile reader/writer and the high capacity memory tag is implementable.

A. Future development

The UWBLEE wireless connection technology presented in this paper provides data rates significantly exceeding the existing NFC technology already in the market. From technology ecosystem point-of-view there is little sense in developing UWBLEE as an independent technology. UWBLEE can thus be seen as a possible future high-speed extension to existing RFID or NFC technologies.

In a multi-device environment one device can work as a proxy for the memory tag and provide other devices with access to its services [11]. There are also possibilities to have memory tags with their own power sources, which eliminate the need of wireless powering. In that case, the reading range can be extended or power use within the mobile phone can be reduced. The phone can also communicate directly with other similarly equipped phones.

Our RF memory tag solution supports Nokia's *Explore and Share* concept, a new way of transferring content (e.g., multimedia, maps, and applications) to a mobile phone [25].

V. CONCLUSIONS

The evolution of non-volatile memory technologies gives the basis for the vision about RF memory tags. However, the large memory creates a need for a high-speed data connection that can be used to transfer the contents of the tags in a timeframe acceptable for the user. The dual-band radio interface, UWBLEE introduced in this paper provides the required data rate and possibility for future scalability as memory sizes become larger.

Modular architecture is mandatory in the RF memory tag system to optimize performance. For example, latencies common in memory access of centralized systems are not acceptable. Power consumption of the mobile reader/writer is efficiently minimized with an independent sub-system keeping the involvement of the main processor at the minimum. In contrast to conventional radio systems, the main processor only triggers the communication and the independent sub-system handles the transfer and storage of the data. Thus, the main processor does not have to be involved in the low level communication processes.

ACKNOWLEDGMENT

We thank all the partners of MINAmI project, who have contributed to development of this technology. This study is a part of MINAmI project under EU FP6 contract IST-034690. This research was also supported by the Finnish Academy under grant no 129446.

REFERENCES

- [1] V. Wu, M. Montanari, N. Vaidya, and R. Campbell, "Distributed RFID tag storage infrastructure". University of Illinois at Urbana-Champaign, IL, USA. Tech. Rep. 2009.
- [2] N. Ahmed, R. Kumar, R.S. French, and U. Ramachandran, "RF2ID: a reliable middleware framework for RFID deployment", Proc. IPDPS 2007. IEEE, 2007, pp 1–10.
- [3] N. Ahmed, and U. Ramachandran, "Reliable framework for RFID devices". Proc. MDS'08. ACM, 2008, pp. 1–6.
- [4] C. Ying, "A verification development platform for UHF RFID reader", Proc. CMC'09. IEEE, 2009, pp. 358–361.
- [5] N. Pillin, N. Joehl, C. Dehollain, and M.J. Declercq, "High data rate RFID tag/reader architecture using wireless voltage regulation". Proc. RFID 2008. IEEE, 2008, pp. 141–149.
- [6] "HP unveils revolutionary wireless chip that links the digital and physical worlds". HP, Palo Alto, CA, USA, 2006.
- [7] J. Nielsen, "Usability engineering". Morgan Kaufmann, 1993.
- [8] W. Cui, P. Ranta, T.A. Brown, and C. Reed, "Wireless video streaming over UWB". Proc. ICUWB 2007. IEEE, 2007, pp.933–936.
- [9] H. Witschnig, C. Patauner, A. Maier, E. Leitgeb, and D. Rinner, "High speed RFID lab-scaled prototype at the frequency of 13.56 MHz". Elektrotechnik & Informationstechnik, vol. 124, 2007, pp. 376–383.
- [10] J. Jantunen, I. Oliver, S. Boldyrev, and J. Honkola, "Agent/space-based computing and RF memory tag interaction". Proc. IWRT 2009.
- [11] E. Kaasinen, M. Niemelä, T. Tuomisto, P. Välikkynen, I. Jantunen, J. Sierra, M. Santiago, and H. Kaaja, "Ubimedia based on readable and writable memory tags". Multimedia Systems, vol. 16, no. 1, 2010, pp. 57–74.
- [12] MINAmI website. www.fp6-minami.org, accessed 6 July 2010.
- [13] I. Jantunen, H. Laine, P. Huuskonen, D. Trossen, and V. Ermolov, "Smart sensor architecture for mobile-terminal-centric ambient intelligence", Sens. Actuators A, vol. 142, 2008, pp. 352–360.
- [14] Y. Têtu, I. Jantunen, B. Gomez, and S. Robinet, "Mobile-phone-readable 2.45GHz passive digital sensor tag", Proc. RFID 2009. IEEE, 2009, pp. 88–94.
- [15] NoTA World. www.notaworld.org, accessed 6 July 2010.
- [16] K. Keinänen, J. Leino, and J. Suomalainen, "Developing keyboard service for NoTA". VTT, Espoo, Finland. Tech. Rep. 2008.
- [17] MIPI website. www.mipi.org, accessed 6 July 2010.
- [18] S. Asthana, and D.N. Kalofonos, "The problem of Bluetooth pollution and accelerating connectivity in Bluetooth ad-hoc networks". Proc. PerCom 2005. IEEE, 2005, pp. 200–207.
- [19] J. Jantunen, A. Lappeteläinen, J. Arponen, A. Pärssinen, M. Pelissier, B. Gomez, and J.A. Keignart, "New symmetric transceiver architecture for pulsed short-range communication". Proc. GLOBECOM 2008. IEEE, 2008, pp. 1–5.
- [20] S.R. Aedudodla, S. Vijayakumaran, and T.F. Wong, "Timing acquisition in ultra-wideband communication systems". IEEE Trans. Veh. Technol., vol. 54, no. 5, 2005, pp. 1570–1583.
- [21] M. Pelissier, B. Gomez, G. Masson, S. Dia, M. Gary, J. Jantunen, J. Arponen, and J. Varteva, "112Mb/s full duplex remotely-powered impulse-UWB RFID transceiver for wireless NV-memory applications". Proc. 2010 Symposium of VLSI Circuits.
- [22] G.W. Burr, B.N. Kurdi, J.C. Scott, C.H. Lam, K. Gopalakrishnan, and R.S. Shenoy, "Overview of candidate device technologies for storage-class memory". IBM J. Res. Dev., vol. 52, no. 4, 2008, pp. 449–464.
- [23] "Intel, STMicroelectronics deliver industry's first phase change memory prototypes". Physorg.com, 6 Feb 2008.
- [24] Z. Shelby, P. Mahonen, J. Riihijärvi, O. Raivio, and P. Huuskonen, "NanoIP: the zen of embedded networking", Proc. ICC 2003. IEEE, 2003, vol. 2, pp. 1218–1222.
- [25] M. Cooper, "Explore and Share – Nokia shows ultra-fast wireless data transfer concept". Nokia Conversations, 23 Feb 2010.